

Your SLED Box

Contents



Adventure Guide

30+ hours of design thinking, project creation, and leadership development curriculum



Advisor Resource items

Everything you need to launch SLED successfully

INCLUDES...



Trail Guide Letter



Get Started with SLED



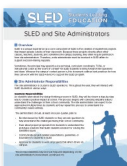
SLED Ranks, Points and Badges



Classroom Supply List



SLED Advisor Responsibilities



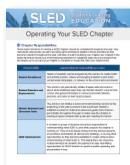
SLED Site Administrators



SLED Culture



SLED Student Recruitment



Operating Your SLED Chapter



Pacing Guide



National Competition



Creating a SLED Board of Leaders



SLED Recruitment Poster



Student resources

Templates for students to reference, and a poster-size Mission Statement to hang in your classroom

INCLUDES...



SLED Proposal Template



Mission Statement

Earn Vision Caster badge!

SLED Student Led



Student Journals

Individual journals for students to decorate. Used to keep track of project ideas, reflect on Adventure Guide prompts, and take notes during empathy interviews



Student Certificates

Sign and award certificates at the conclusion of your SLED program



Classroom Mt. SLED Poster **Earn House of SLED badge!**

A classroom visual to show students the impact they have made, and inspire them to continue to climb higher



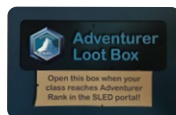
Rank Stickers

When your chapter reaches a new rank in the portal, place the new rank sticker on the poster as a visual reminder of your progress

Rank “Loot Boxes” full of rank rewards

When your chapter reaches a new rank in the portal, open the Loot Box and give students a SLED reward

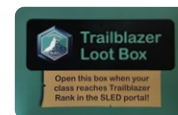
INCLUDES...



Adventurer Loot Box -
30 wristbands



Pathfinder Loot Box
- 30 name badges



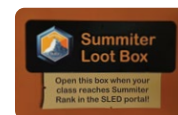
Trailblazer Loot Box
- 30 key chains



Climber Loot Box -
30 sticker books



Mountaineer Loot Box
- 30 magnets



Summitter Loot Box
- 30 backpack tags & 30 patches

Blank Thank You cards

Earn First of the Year & Project Submission badge!

Supplies for your chapter to complete their first project

SLED

Classroom Supplies

Supplies for your chapter to complete their first project



INCLUDES...



Set of markers and colored pencils



Pencils x30

Loot Boxes

What Is A Loot Box?

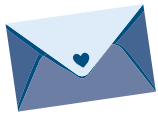
Loot Boxes are a way to reward your chapter for working hard and making an impact. Their contents are meant to be a surprise for your students, so do not open them until they are earned! To earn a Loot Box, your chapter must reach a specific rank in the SLED portal. Refer to the portal for rank requirements (# of points, badges) needed to earn each Loot Box.

Once your chapter meets the requirements and your rank status has changed in your portal, you will receive an email from your Trail Guide to celebrate your chapter's accomplishments. Then, it is time for the grand reveal!



Opening The Loot Box

Once you have earned a new rank, you should place the Rank Sticker on your classroom poster, and open the corresponding Loot Box. Allow time for your students to recognize the incredible work they have done. As a group, reflect on the projects you completed and badges you earned together. Remember the impact your projects have had, and think about the positive changes you will continue to create! As you pass out the rewards to your students, encourage them to keep up their energy and momentum to climb Mt. SLED.



Your First Project: Appreciation Cards



To start your very first SLED project, you can start with a simple concept: appreciation cards for school staff. Begin by creating a project proposal on the SLED portal. Then, complete the activity with your class. Finally, activate the proposal and submit it to your Trail Guide in the portal! They will award points for your first project.

Step 1: Fill Out The Project Proposal Online

Work with your students to create your first project proposal on the SLED portal. Optionally, you can use the sample text below as a starting point.

Proposal Title: Appreciation Cards

Problem Statement: Our school staff have done a lot of hard work to kick off the new school year / semester. We want to make sure that it doesn't go unrecognized.

Project Purpose: To thank our school staff, and help them feel appreciated and seen for all their hard work.

Project Plan: Together, we will create cards for staff. We will count up how many cards we need to make, and for whom. We will decide if we want to write specific individual messages to staff, or create generic "thank you" sentiments. We will decide together what we want to say. Students then will write out their notes and designs to get approved before they move into the card creation. Once all cards are completed, we will finalize a day to deliver each card.

Project Requirements: Markers, colored pencils, blank cards/cardstock

Measure Your Impact

People Impacted Current Value: 0

People Impacted Goal Value: (The number of staff you hope to impact)

Hours Spent Current Value: (1 hr)

Hours Spent Goal Value: (The number of hours you will spend making and delivering cards)

Step 2: Complete the Activity

Activate your proposal in the SLED portal when you are ready to begin. Follow the procedure outlined in the project plan. Students should create appreciation cards, and hand them out.

Step 3: Submit the Project to Your Trail Guide

Once the project is completed, return to your SLED portal and complete the project reflection as a group. Enter how many people were impacted, and how long the project took. Submit your project, and wait for your Trail Guide's feedback and points!

Bonus Points!

After completing and submitting your first project, be sure to apply for the First of the Year badge AND the Project Submission badge. You have met the requirements for those badges, and can earn 500 points for both!



Your First Badge: Vision Caster



An easy badge to earn is the Vision Caster badge, which requires your chapter to create a Mission Statement.

You will find your SLED Mission Statement poster in the Student Folder from your SLED Box. Session 5 in your Adventure Guide has a complete lesson on building your SLED mission statement. You can follow along, OR complete the mission your own way. Once you have decided on your mission statement, fill out your poster and display it in a prominent area.

Once completed, visit the SLED portal. Find the Vision Caster badge under the Badges section's Operations tab, and apply.

Provide your description (write out your vision), and list the people impacted (number of students in your chapter) and the hours invested (however long it took to complete). Submission time!

